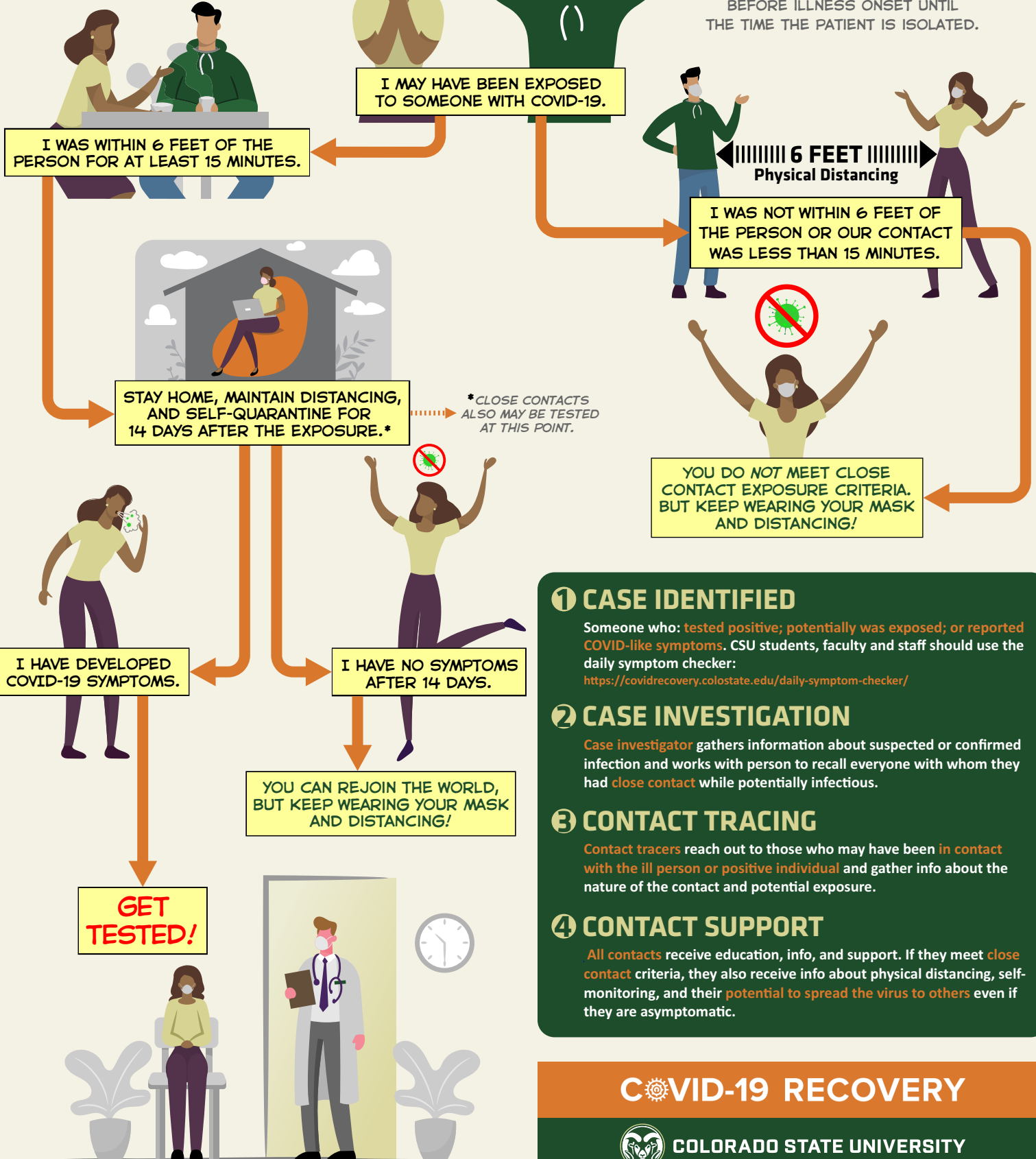


CONTACT TRACING EXPLAINED

HAVE YOU BEEN IN CLOSE CONTACT* WITH SOMEONE WHO HAS COVID SYMPTOMS OR HAS TESTED POSITIVE FOR THE VIRUS?

PLEASE ANSWER YOUR PHONE WHEN A CONTACT TRACER CALLS. YOU MUST COMPLY WITH CSU CONTACT TRACING AND PUBLIC HEALTH DIRECTIONS!

* THE CENTERS FOR DISEASE CONTROL DEFINE "CLOSE CONTACT" AS SOMEONE WHO WAS WITHIN 6 FEET OF AN INFECTED PERSON FOR AT LEAST 15 MINUTES STARTING FROM 48 HOURS BEFORE ILLNESS ONSET UNTIL THE TIME THE PATIENT IS ISOLATED.



1 CASE IDENTIFIED

Someone who: **tested positive**; **potentially was exposed**; or **reported COVID-like symptoms**. CSU students, faculty and staff should use the daily symptom checker: <https://covidrecovery.colostate.edu/daily-symptom-checker/>

2 CASE INVESTIGATION

Case investigator gathers information about suspected or confirmed infection and works with person to recall everyone with whom they had **close contact** while potentially infectious.

3 CONTACT TRACING

Contact tracers reach out to those who may have been **in contact with the ill person or positive individual** and gather info about the nature of the contact and potential exposure.

4 CONTACT SUPPORT

All **contacts** receive education, info, and support. If they meet **close contact** criteria, they also receive info about physical distancing, self-monitoring, and their **potential to spread the virus to others** even if they are asymptomatic.

COVID-19 RECOVERY



COLORADO STATE UNIVERSITY